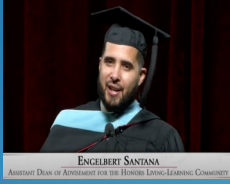


RU-N Recap

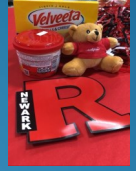
On November 5th, Dr. Jonathan Holloway was officially inaugurated as the 21st President of Rutgers, The State University of New Jersey. Engelbert Santana, Assistant Dean of Advisement for HLLC, spoke on behalf of Rutgers-Newark at the ceremony, reminding everyone that **RU-N is "where excellence meets opportunity."**

RU-N Represent!

Click either picture to view the recording of the inauguration.



With more than 200 donors, RU-N has won the Raptors vs. Raiders food drive challenge! With another successful year of supporting **pantryRUN**, we would like to thank all of the donors who contributed to reducing food insecurity. Remember, contributions can be made **year-round** and can be ordered to be delivered directly.



Upcoming Events



Holiday CandyGrams!

Show your appreciation for your colleagues! Send a CandyGram for the holiday season with a personalized note by [clicking here!](#)

Happy Holidays!

RU-N to NJPAC is re-ignited!

Usher in the holiday season by attending RU-N to NJPAC with family and friends! With events for children that have spanned from face-painting to photo-ops in the past, attend this year's showing of Hip Hop Nutcracker at NJPAC with a hip hop dance class pre-show! December 18, starting at 12:30pm, [learn more here!](#)

Save the Date! Staffy Hour Coming Soon!

Join the RU-N Staff Council on Wednesday, January 12, for Staffy Hour followed by back-to-back basketball games featuring the Women's team at 6 p.m. and Men's team at 8 p.m., both facing off against TCNJ.

Let's go Raiders!

Volunteer to be an online HLLC evaluator!

HLLC is looking for volunteers for student interviews for the upcoming 2022 cohort. Online interviews will start in January and continue through the spring semester.

[Click here to sign up and learn more!](#)

WE **R** STAFF

RU-N Staff Council highlights some of our excellent staff members. Meet Nick & Dorothy!



Nick Inaugurato, Security Officer

- * **Comfort Food?**
Pasta.
- * **Favorite Cartoon Character?**
Yosemite Sam!
- * **Historical Figure who Inspires You?**
Ed Koch.
- * **Biggest takeaway from the Pandemic?**
Determination & Perseverance.



Dorothy Grauer, Library Associate II

- * **Favorite Cartoon Character?**
Felix the Cat!
- * **Who Inspires You?**
My mother.
- * **Biggest Takeaway from the Pandemic?**
Be patient & kinder. Keep in touch with family & friends and don't take them for granted.
- * **Favorite memory of working at RU-N?**
Working with student workers & helping organize the URA-AFT.

News You Can Use!

Staff members can [view W2 information](#) and update emergency contact information by visiting your myRutgers portal. After logging in, navigate to the "Employee Self Service" tab, and W-2 info will be available under "Payroll and Compensation." Emergency contact information can be updated under "Personal Information."

Did You Know?

One of the many benefits of being a Rutgers University employee is having access to discounts from various vendors. Ranging from recreation to dining to museums, there are endless rewards ripe for the picking! [Click here to learn more.](#)

On behalf of the RU-N Staff Council, we wish you and your loved ones a happy and healthy holiday season and winter break!

BRAG ABOUT IT!

Share your happy news! Milestones, anniversaries, accomplishments, new hobbies, pets, anything is welcome! Help us spread the spirit to our campus community. Click Frosty the Snowman to share.



Suggestions are always welcome. Share your thoughts by [clicking below!](#)



Follow the RU-N Staff Council on socials for all updates! [Click below!](#)