

# RUTGERS

UNIVERSITY | NEWARK

Staff Council

**CHAT WITH THE  
CHANCELLOR**

## Thank you for joining us!

<https://go.rutgers.edu/RUNSC-Suggest>

Email:

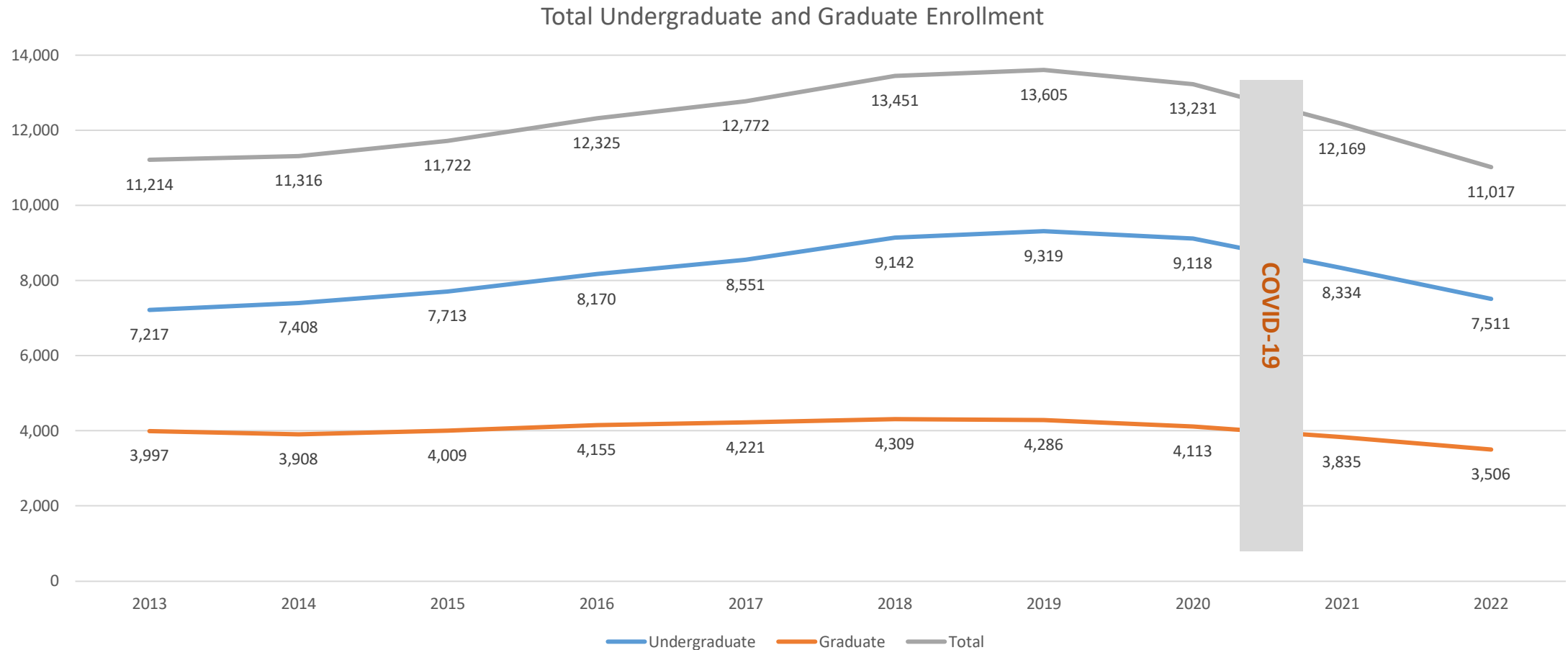
[staff.council@newark.rutgers.edu](mailto:staff.council@newark.rutgers.edu)

Website:

[staffcouncil.newark.rutgers.edu](http://staffcouncil.newark.rutgers.edu)



# Rutgers-Newark Total Fall Enrollments 2013-2022



## Office of Graduate and Undergraduate Admissions / Visitor Center

- In Fall 2022, the RU-Newark Admissions Office relocated from Engelhard Hall to 35 Warren
- This move will allow for the Career Development Center (CDC) to re-locate to Engelhard
- CDC's space in Hill Hall will be activated by SAS-N
- **Timing:** Most moves expected to be complete by Fall 2023





# Office of Graduate and Undergraduate Admissions / Visitor Center



# Office of Graduate and Undergraduate Admissions / Visitor Center





## One-Stop Student Center

- The One-Stop Student Center at Blumenthal Hall will relocate to the 1<sup>st</sup> Floor of Conklin Hall
- Commuter Lounge, Student-Centered Space and ADA Enhancements
- The Writing Center and the Writing Program will relocate to the Hahne Building in Spring 2023
- Construction on the One-Stop will commence in Spring/Summer
- **Timing:** The One-Stop is projected to be complete by Fall 2025

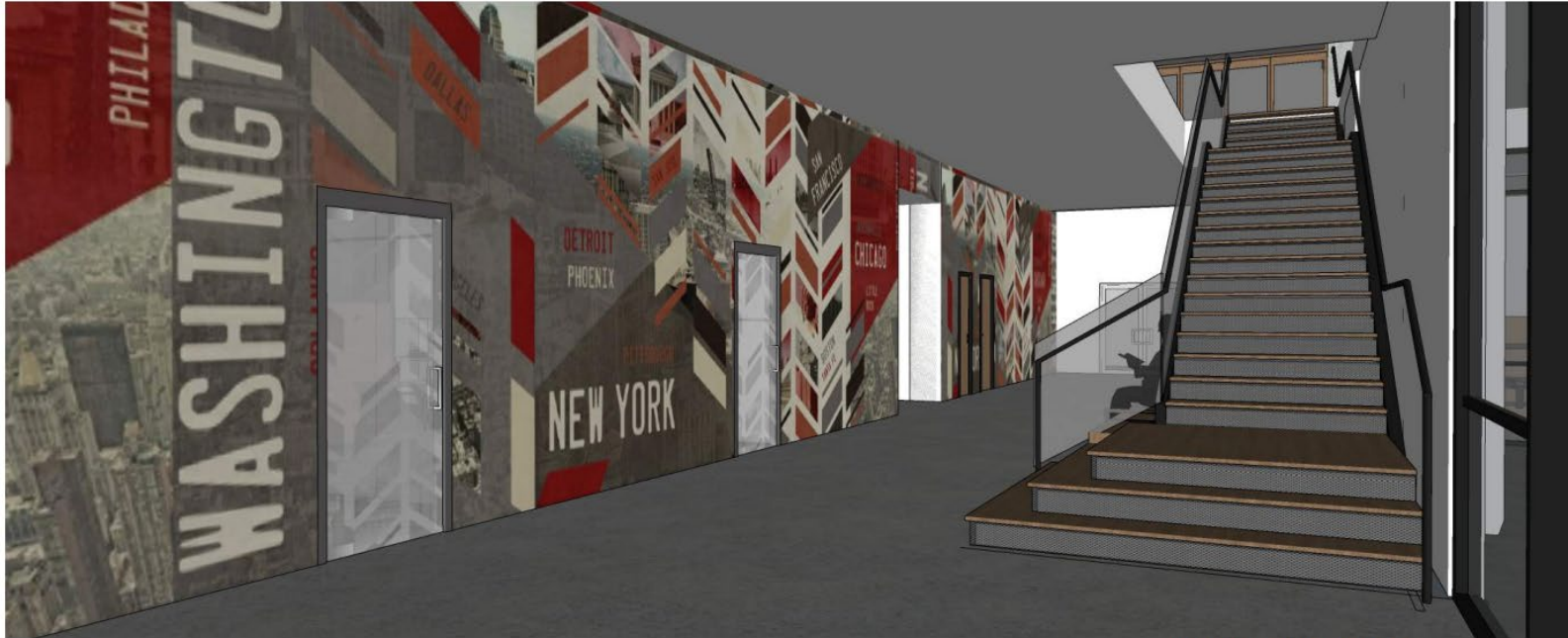


# Rutgers-Newark One-Stop Student Center



**CONKLIN ONE-STOP**  
VIEW FROM ABOVE OF THE FIRST FLOOR.

# Rutgers-Newark One-Stop Student Center



## **INTERIOR VIEW OF ONE-STOP**

THIS VIEW IS TAKEN FROM THE MAIN ENTRANCE DOORS INTO CONKLIN HALL. THESE NEW STAIRS WILL CONNECT FIRST AND SECOND FLOOR SO STUDENTS CAN GET ACCESS TO ONE STOP FROM THE PLAZA AND FROM UNIVERSITY AVE.



# Rutgers-Newark One-Stop Student Center



## Human Resources Relocation to 45 Bleeker

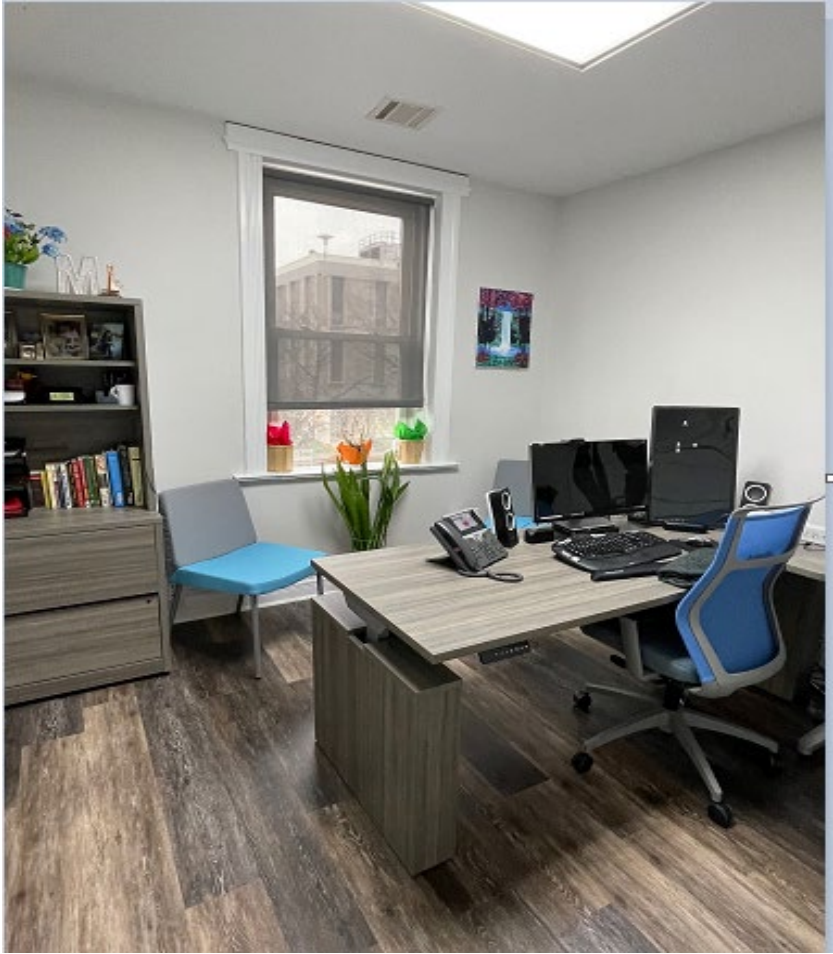
- RU-N HR Office Moved from Blumenthal Hall to Bleeker Street
- Vacated space in Blumenthal Hall will now be activated by Student Affairs for more student serving space
- **Timing:** Design and planning for Blumenthal Hall space is underway







# Human Resources- 45 Bleeker St

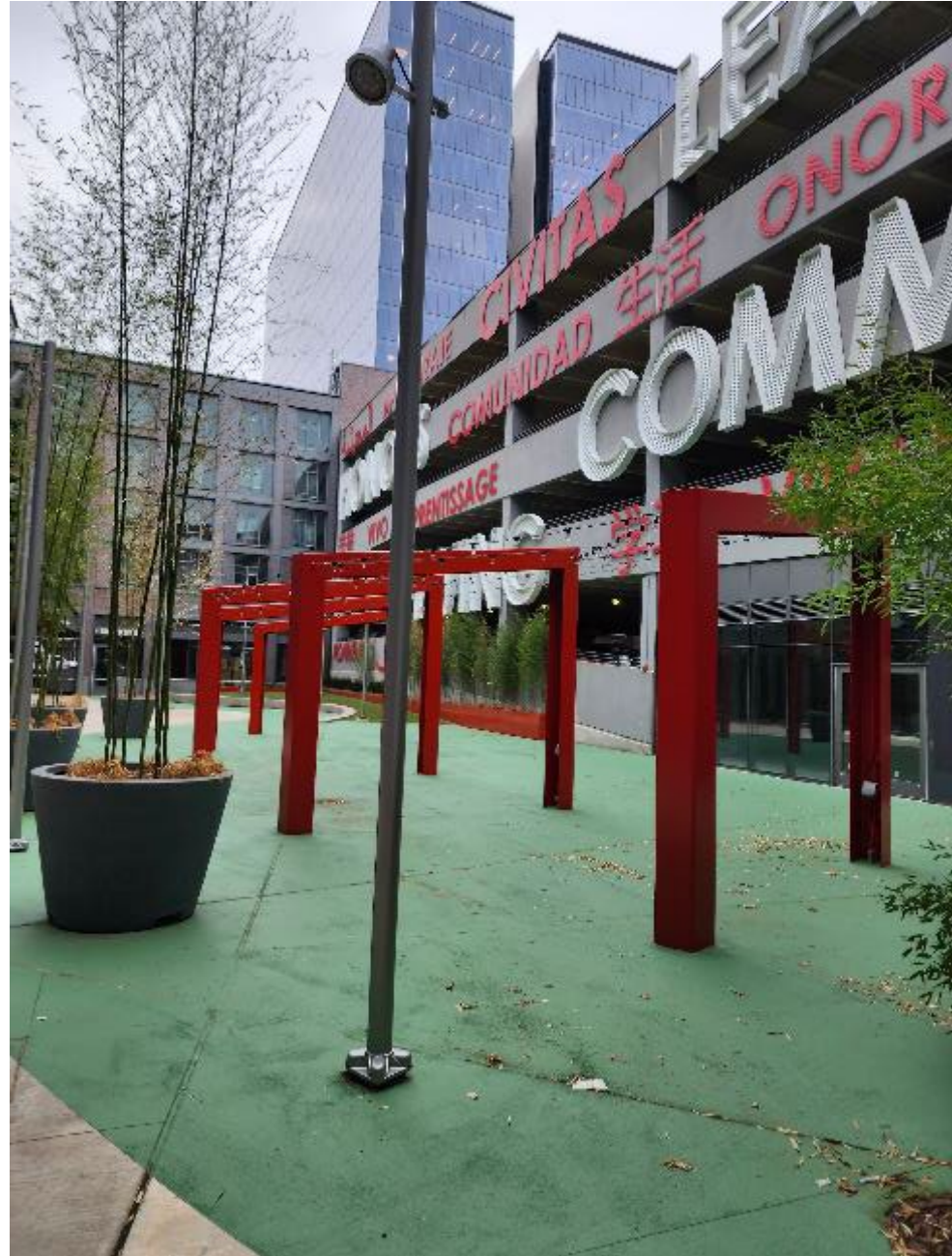




## 48 New Street – Ground Floor

- Global Piazza completed in Fall 2022
- Other Ground Floor Activity Underway:
  - Fiserv Innovation Lab (opening 2023)
  - Kung Fu Tea (opening soon)
  - Jersey Mikes (open)
  - Shipping Store (tbd)
  - Sugaring (tbd)
  - Mr. Burrito (construction underway)
- **Timing:** On-going











# Resources shared by Executive Vice Chancellor Sherri-Ann Butterfield

## [Care.com Caregiver Support Pilot Program for Rutgers University](#) *(September 1, 2022 –August 31, 2023)*

- Sign up at [rutgers.care.com](https://rutgers.care.com), or call 855-781-1303
- Safety resources
- Backup Care: Subsidized, vetted care for children & adults when regular care is not available.
- LifeMart: Online platform providing offers and discounts on products and services nationwide.

## [Rutgers Employees First Initiative](#)

- Wellness Webinar Series
- Leader Resources
- Employee Resources

## [Rutgers Wellness App](#)

- Universitywide COVID-19 Information, Therapeutic Services, Wellness Webinars, Being at Home and at Work, Physical Wellness, Mental Wellness, Peer Support

## [Employee Well-Being Resource Guide](#)

# **FLOWERGRAMS RETURN!**



**Show your RU-N colleagues you care, by sending them a personalized FlowerGram for Valentines Day!**

Through Friday, February 10, 2023, Staff Council will be collecting donations for pantryRUN. For every item you donate, you can send one FlowerGram to a staff member.

## **Drop off your donations:**

- Wednesday, Feb 1 @ 2pm-4pm, RBS
- Thursday, Feb 2 @ 12pm-2pm, Law School
- Monday, Feb 6 @ 12pm-2pm, Hill Hall
- Wednesday, Feb 8 @ 10am-12pm, RBS

## **Or donate online:**

**[https://go.rutgers.edu/  
RUNSC\\_FlowerGram](https://go.rutgers.edu/RUNSC_FlowerGram)**